

# Arts and Commerce College, Rahu

At/Post- Rahu, Tal-Daund, Dist-Pune, 412207.

Government Approval No. : N G. C. 2003 NMVi (1/2003/ M.S. 3) Date. 15 July 2003)

University Approval No. : PU/PN/AC/195-03(221/05)College-717)

Hon. Adv. Shri. Rahul Subhash Kool

MLA - Daund Assembly

President - Kailas Shikshan Mandal, Rahu

Hon. General Assembly Member - SPP University, Pune

Prof. Dr. Gopinath Sahebrao Botre

Principal

( M. Com, D.H.E. M.Phil, Ph.D. )

Outward No. :

Date :

## Clarifications

As per clarification sought by DVV NAAC. We may use policy documents of the organisation, geo-tagged photographs and videos of facilities, 7.1.2. Under this metric, various types of biodegradable and non-biodegradable waste management and equipment purchase bills for facilities created under the Green Campus initiative, presenting a brief report of the facilities provided. The information provided is true to the best of my knowledge.



*G. Botre*

PRINCIPAL

Art's & Commerce College  
Rahu, Tal Daund, Dist Pune



Dnyan-Bal-Shil  
Kailas Shikshan Mandal

Ph. (02119) 272973

Fax. No (02119) 272973

## Arts and Commerce College, Rahu

At/Post- Rahu, Tal-Daund, Dist-Pune, 412207.

Government Approval No. : N G. C. 2003 NMVi (1/2003/ M.S. 3) Date. 15 July 2003)

University Approval No. : PU/PN/AC/195-03(221/05)College-717)

**Hon. Adv. Shri. Rahul Subhash Kool**

MLA - Daund Assembly

President - Kailas Shikshan Mandal, Rahu

Hon. General Assembly Member - SPP University, Pune

**Prof. Dr. Gopinath Sahebrao Botre**

Principal

(M. Com, D.H.E. M.Phil, Ph.D. )

7.1.3 Quality audits on environment and energy regularly undertaken by the Institution. The institutional environment and energy initiatives are confirmed through the following

1. Green audit / Environment audit
- 2.
3. Clean and green campus initiatives
4. Beyond the campus environmental promotion activities

<ol style="list-style-type: none"><li>1. Green audit / Environment audit</li><li>2. Clean and green campus initiatives</li><li>3. Beyond the campus environmental promotion activities</li></ol>	<p><a href="https://drive.google.com/file/d/1x005yKh0PKmC0dldRObaQbCzpNAIYTf8/view?usp=drive_link">https://drive.google.com/file/d/1x005yKh0PKmC0dldRObaQbCzpNAIYTf8/view?usp=drive_link</a></p>
--	--



  
PRINCIPAL

Art's & Commerce College  
Rahu, Tal.Daund, Dist.Pune  
Dr. Gopinath Sahebrao Botre

## GREEN CAMPUS POLICY

Kailas Shikshan Mandal's Arts and Commerce College should demonstrate higher sensitivity and responsibility in implementing green concepts in the campus. The campus sustainability initiatives are established with the aim of promoting green practices in and beyond the institution and developing best practices strategies in environmental management. Although establishment and maintenance of green campus is important, spreading awareness on the green practices among students and educating stakeholders is our priority.

The policy starts with information and ends with a plan of action. In turn, SIET will fairly manage water resources, waste management, conserve natural resources, and provide eco- friendly and recommend minimal paper use. Institute will implement following practices towards establishment and maintenance of green campus and adopt the awareness and green initiatives beyond the campus too. This will result in a safe environment that is a better place to live, learn and play.

### Waste Management

Spread the awareness amongst society about the waste management for the ecosystem and methods for its disposal.

  
अनपारमडल अधिकारं  
यवत



  
PRINCIPAL  
Art's & Commerce College  
Rahu, Tal.Daund, Dist.Pune



**Kailas Shikshan Mandal's  
Art's Commerce College Rahu  
Tal-Daund, Dist-Pune 412207.**

# **Green Campus Policy**



## Arts and Commerce College, Rahu

At/Post- Rahu, Tal-Daund, Dist-Pune, 412207.

Government Approval No. : N G. C. 2003 NMVi (1/2003/ M.S. 3) Date. 15 July 2003)

University Approval No. : PU/PN/AC/195-03(221/05)College-717)

Hon. Adv. Shri Rahul Subhash Kool

MLA - Daund Assembly

President - Kailas Shikshan Mandal, Rahu

Hon. General Assembly Member - SPP University, Pune

Prof. Dr. Gopinath Sahebrao Botre

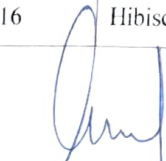
Principal

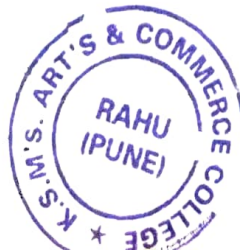
(M. Com, D.H.E. M.Phil, Ph.D. )

### Green campus

#### Number of Trees in College Campus

Sr NO	Tree Name Botnical	Simpal Tree Name	Total
1	Ashoka Tree	Ashoka	20
2	Peepal Tree	Pimpal Tree	2
3	Royal Poinciana Flower	Gulmohre	7
4	Tamarind Tree	Chinch Tree	5
5	Ceucaena Leucocephala Tree	Subabal	20
6	Eucalyptus Tree	Neelgari Tree	8
7	Neem Tree	Kadu Neem	16
8	Clusterfig Tree	Umber Tree	1
9	Ocimum Tenuifium Tulsi	Ram Tulshi	20
10	Plumeria Tree	Chafa	7
11	Bauhiria Racemosa Tree	Apta	2
12	Pam Tree	Pam	6
13	Thaiks Tree	Thaiks	7
14	Mogra	Mogra	3
15	Crepe Jasmina Flower	Chadni	2
16	Hibiscus Rose	Jaswand	02

  
Hon. Adv. Shri Rahul Subhash Kool  
MLA - Daund Assembly



  
PRINCIPAL  
Art's & Commerce College  
Rahu, Tal.Daund, Dist.Pune.

## Green Building

Cleanliness in and around the campus and waste minimization


## Tobacco Free campus

According to institute policy and rules the use of tobacco products is treated as an offence.

## Green initiatives beyond the campus

The Green Campus Programs beyond the campus should be encouraged and planned. Strong commitment and support from the Management will always be there to the Arts and commerce college rahu for contribution to embedding sustainability in the campus and beyond the campus. The student-led Green Campus programs to be initiated by NSS volunteers under the NSS College Program Officer.

Arts and commerce college rahu has to work out the time bound strategies to implement **green campus** initiatives for healthy ecosystems.

  
नमोऽस्मिन्मंडल अधिकारं  
येषु



  
PRINCIPAL  
Art's & Commerce College  
Rahu, Tal.Daund, Dist.Pune



# कला व वाणिज्य महाविद्यालय, राहू

म.पो. राहू, ता. दौंड, जि. पुणे.

(जागरूक मान्यता क्र. एन जी सी. २००३ नमोपि (१) २००३/म. जि. ३) दि. १५ जून् २००३)

(विद्यापीठ मान्यता क्र. PU/PN/AC/196-03(221/05)COLLEGE - 717)

मा. प्रो. श्री. राहुल सुभाष कुल

संचालक - कला व वाणिज्य

महाविद्यालय, राहू

म.पो. राहू, ता. दौंड, जि. पुणे

*College OC* (98)

प्रा. डॉ. गोपीनाथ साहेबराव बा.

प्राचार्य

(एम कॉम, डी एच.ई., एम फिल, पीएच.डी.)

मा. ९८२२८९६३९८

दिनांक - १७/०७/२०२३/२०२४

दिनांक : १७/०७/२०२३

प्रति

मा. मरपंच

ग्रामपंचायत कार्यालय राहू

राहू ता. दौंड, जि. पुणे ४१२२०९

विषय : महाविद्यालयाचा ओल कचरा व मुका कचरा उचलण्यास कचरा गाडी मिळणेबाबत . . .

मा. महोदय

वर्गिल विषया अनुसरून आपणाम विनंती की कला व वाणिज्य महाविद्यालय राहू ता. दौंड, जि. पुणे ४१२२०९ या अवागतील ओल कचरा व मुका कचरा उचलण्यास कचरा गाडी मिळावी ही विनंती .

महत्कार्या वहल धन्यवाद !

कळावं

*[Signature]*  
संचालक अधिकारी

*[Signature]*  
१७/०७/२०२३  
ग्रामपंचायत राहू,  
ता. दौंड, जि. पुणे



*[Signature]*  
PRINCIPAL  
Art's & Commerce College  
Rahu, Tal. Daund, Dist. Pune  
*[Signature]*  
PRINCIPAL  
Art's & Commerce College  
Rahu, Tal. Daund, Dist. Pune



‘कैलास शिक्षण मंडळाचे’

कला व वाणिज्य महाविद्यालय राहू

ता.दौंड, जि.पुणे ४१२२०७.

ओला कचरा व मुका कचरा व्यवस्थापन

अहवाल

कला व वाणिज्य महाविद्यालयाच्या मागणीनुसार दिनांक १७.०७.२०२३ रोजी मौजे ग्रामपंचायत कार्यालय राहू येथून कला व वाणिज्य महाविद्यालय येथे ओला कचरा व मुका कचरा उचलण्यासाठी कचरा गाडी वोलवण्यात आली. महाविद्यालय परिसरातील सर्व ओला व मुका कचरा एका टिकाणी जमा करून तो कचरागाडीत टाकण्यात आला. व ओला व मुका कचऱ्याचे योग्य व्यवस्थापन महाविद्यालयीन स्तरावर करण्यात आले.



**PRINCIPAL**  
Art's & Commerce College  
Rahu, Tal.Daund, Dist.Pune.





Google

Rahu, Maharashtra, India  
H7C8+RSP, Rahu, Maharashtra 412207, India

Lat 18.572492°

Long 74.265242°

OP'S Map Camera

24/07/23 10:15 AM GMT +05:30

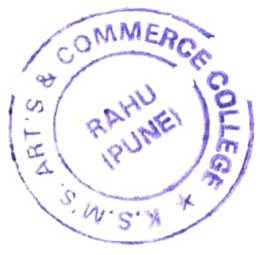




Google

Rahu, Maharashtra, India  
H7C8+R5P, Rahu, Maharashtra 412207, India  
Lat 18.57255°  
Long 74.265242°  
24/07/23 10:14 AM GMT +05:30

GPS Map Camera



  
**PRINCIPAL**  
Arts & Commerce College  
Rahu, Tal.Daund, Dist.Pune.



**PRINCIPAL**

Art's & Commerce College  
Rahu, Tal. Daund. Dist. Pune.





GPS Map Camera

Rahu, Maharashtra, India


Taluk. Daund, H7F8+843, Rahu, Maharashtra 412207, India

Lat 18.573224°

Long 74.265339°

01/08/23 05:26 PM GMT +05:30

Google

  
**PRINCIPAL**  
Art's & Commerce College  
Rahu, Tal. Daund, Dist. Pune







GPS Map Camera

Rahu, Maharashtra, India


Taluk. Daund, H7F8+843, Rahu, Maharashtra 412207, India

Lat 18.573224°

Long 74.265339°

01/08/23 05:24 PM GMT +05:30

Google

  
Principal  
Arts & Commerce College  
Rahu, Tal. Daund, Dist. Pune







GPS Map Camera

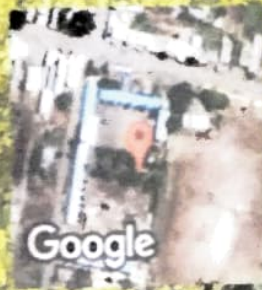
Rahu, Maharashtra, India

H7F8+79X, Wagholi - Rahu Rd, Rahu, Maharashtra 412207,  
India

Lat 18.573192°

Long 74.265832°

02/08/23 12:06 PM GMT +05:30

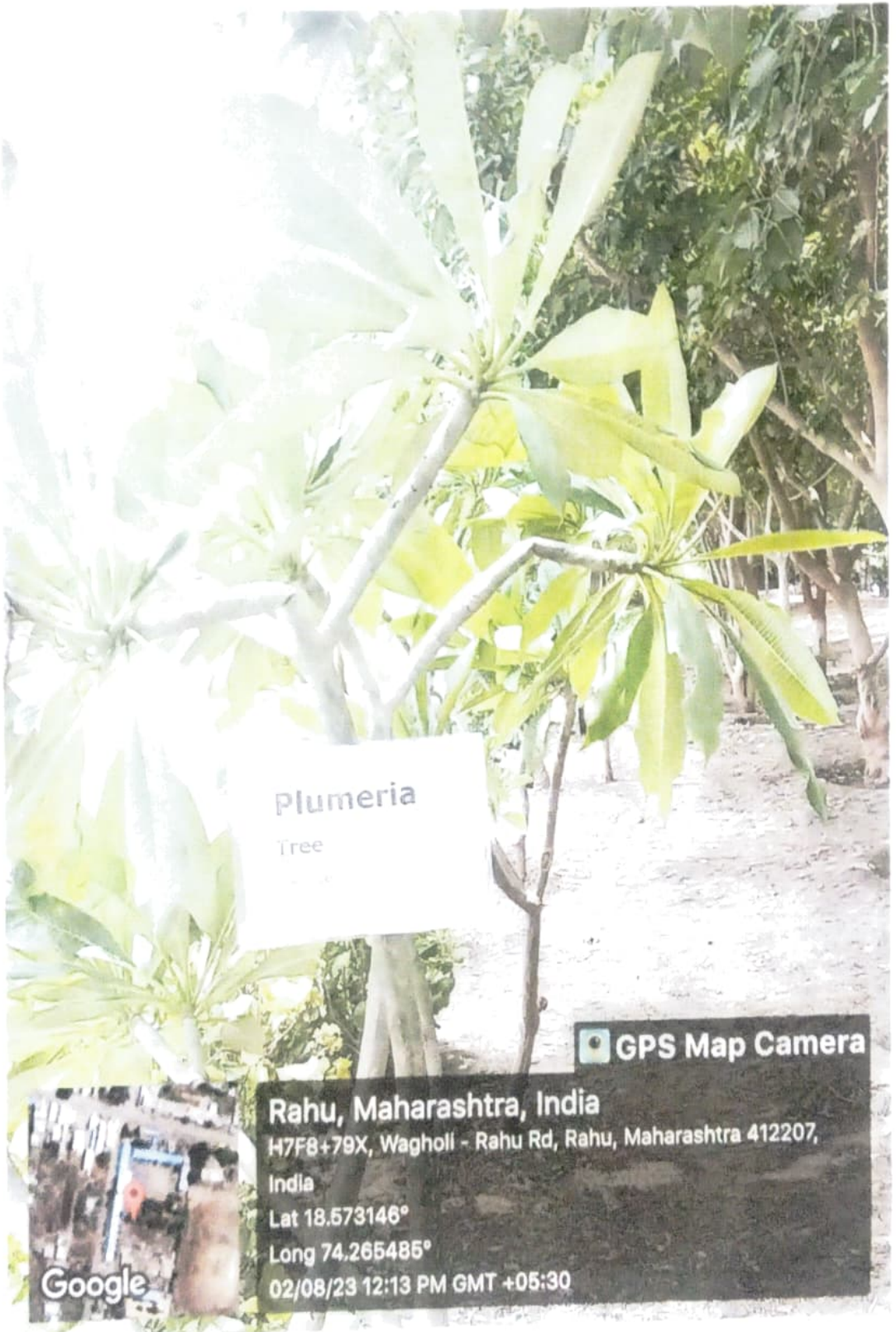


Google

  
**PRINCIPAL**  
Art's & Commerce College  
Rahu, Tal.Daund, Dist.Pune.








  
**PRINCIPAL**  
Art's & Commerce College  
Rahu, Tal Daund, Dist. Pune





 **GPS Map Camera**



**Rahu, Maharashtra, India**  
**Taluk. Daund, H7F8+843, Rahu, Maharashtra 412207, India**  
**Lat 18.573224°**  
**Long 74.265339°**  
**01/08/23 05:21 PM GMT +05:30**

  
**PRINCIPAL**  
**Art's & Commerce College**  
**Rahu, Tal. Daund, Dist. Pune**





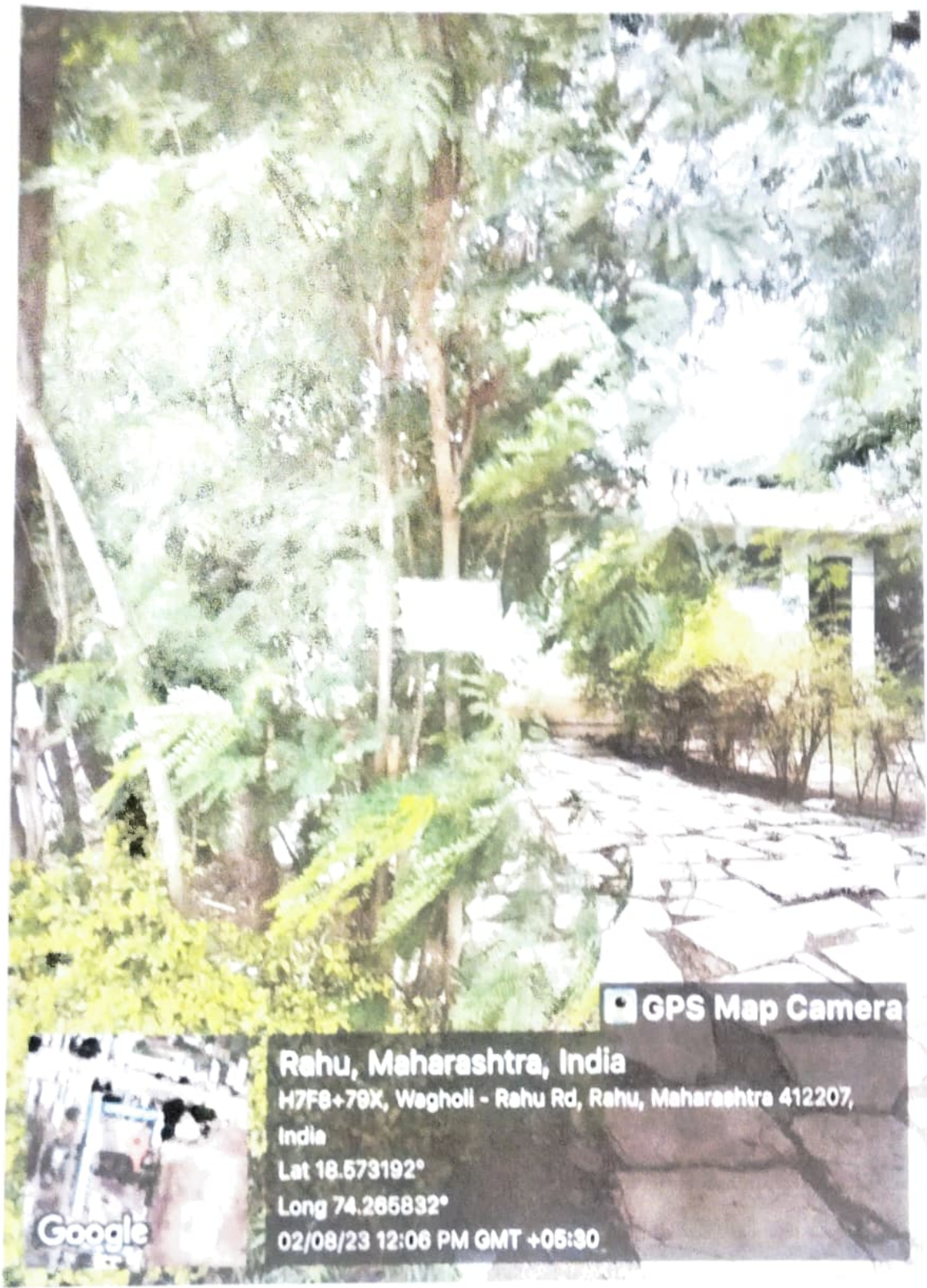


  
PRINCIPAL

Art's & Commerce College  
Rahu, Tal. Daund, Dist. Pune.







GPS Map Camera

Rahu, Maharashtra, India  
M7F8+79X, Wagholl - Rahu Rd, Rahu, Maharashtra 412207,  
India  
Lat 18.573192°  
Long 74.265832°  
02/08/23 12:06 PM GMT +05:30

Google

*[Signature]*  
Principal  
K.S.M.'s Arts & Commerce College  
Rahu, Pune







# श्री मोरया एंटरप्रायजेस

प्रिंटरस अँन्ड सायबर कॅफे

सर्व प्रकारच्या प्रिंटिंगची तसेच सर्व प्रकारची ऑनलाईनची कामे केली जातात.  
भुवनेश्वर मार्केट पुणे, सोलापुर रोड, यवत ता. दौंड, जि. पुणे  
प्रा.प्र. घेतल नवले मो ९८६००९५८५८ ८७९६६५५८५८

नाव कुल व पारिविक महसियाम बिल नः  
राहु गा. रोड. दा. पुणे दि: 24/07/2023

अ.स.	तपशील	नग	दर	रकम
	1) कमिनेशन	10	20	200/-
	<i>paid</i>			
	अडव्हान्स			-
	बाकी			-

दोमंतीरु फस्त एकुण 200/-

श्री मोरया एंटरप्रायजेस

*[Signature]*  
श्री मोरया एंटरप्रायजेस करिता



*[Signature]*  
PRINCIPAL  
Art's & Commerce College  
Rahu, Tal. Daund, Dist. Pune



# गॅलक्सी ग्राफिक्स

फ्लेक्स प्रिंटिंग । स्टार फ्लेक्स । विनाईल । बॅकलाईट । शॉप बोर्ड । वन वे व्हिजन । होर्डिंग  
भुलेश्वर मार्केट पुणे- सोलापुर रोड, यवत ता. दौंड, जि. पुणे  
प्रो.ता. तुषार होले मो. ९५४५९३०३०३

नाव: छात्रांच्या शिक्षण निष्ठे बिल नं: 1569  
छात्रांच्या शिक्षण निष्ठे दि.: 24/07/2022

अ.क्र.	विवरण	नग	दर	स्क्वे.फुट	रक्कम
①	10 x 3  yield	1			400/-
	अॅडव्हान्स	-			
	बाकी	-			
वारंवार देण्यात येईल				एकुण	400/-

  
गॅलक्सी ग्राफिक्स करिता



  
PRINCIPAL  
Art's & Commerce College  
Rahu, Tal. Daund, Dist. Pune