



**Kailas Shikshan Mandal's  
Art's Commerce College Rahu  
Tal-Daund, Dist-Pune 412207.**

# **Green Campus Policy**

## GREEN CAMPUS POLICY

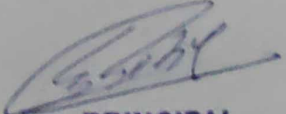
Kailas Shikshan Mandal's Arts and Commerce College should demonstrate higher sensitivity and responsibility in implementing green concepts in the campus. The campus sustainability initiatives are established with the aim of promoting green practices in and beyond the institution and developing best practices strategies in environmental management. Although establishment and maintenance of green campus is important, spreading awareness on the green practices among students and educating stakeholders is our priority.

The policy starts with information and ends with a plan of action. In turn, SIET will fairly manage water resources, waste management, conserve natural resources, and provide eco- friendly and recommend minimal paper use. Institute will implement following practices towards establishment and maintenance of green campus and adopt the awareness and green initiatives beyond the campus too. This will result in a safe environment that is a better place to live, learn and play.

### Waste Management

Spread the awareness amongst society about the waste management for the ecosystem and methods for its disposal.



  
**PRINCIPAL**  
Art's & Commerce College  
Rahu, Tal. Daund, Dist. Pune

## **Green Building**

Cleanliness in and around the campus and waste minimization

## **Tobacco Free campus**

According to institute policy and rules the use of tobacco products is treated as an offence.

## **Green initiatives beyond the campus**

The Green Campus Programs beyond the campus should be encouraged and planned. Strong commitment and support from the Management will always be there to the Arts and commerce college rahu for contribution to embedding sustainability in the campus and beyond the campus. The student-led Green Campus programs to be initiated by NSS volunteers under the NSS College Program Officer.

Arts and commerce college rahu has to work out the time bound strategies to implement **green campus** initiatives for healthy ecosystems.



  
**PRINCIPAL**  
Art's & Commerce College  
Rahu, Tal. Daund, Dist. Pune





Dnyan Bal Shil  
Kailas Shikshan Mandal

Ph. (02119) 272973  
Fax. No (02119) 272973

## Arts and Commerce College, Rahu

At/Post- Rahu, Tal-Daund, Dist-Pune, 412207.

Government Approval No. : N G. C. 2003 NMVI (1/2003/ M. S. 3) Date. 15 July 2003}

University Approval No. : PU/PN/AC/195-03(221/05)College-717}

Hon. Adv. Shri. Rahul Subhash Kool

MLA - Daund Assembly

President - Kailas Shikshan Mandal, Rahu

Hon. General Assembly Member - SPP University, Pune

Prof. Dr. Gopinath Sahebrao Botre

Principal

(M. Com, D.H.E. M.Phil, Ph.D. )

### Green campus

#### Number of Trees in College Campus

Sr NO	Tree Name Botnical	Simpal Tree Name	Total
1	Ashoka Tree	Ashoka	20
2	Peepal Tree	Pimpal Tree	2
3	Royal Poinciana Flower	Gulmohre	7
4	Tamarind Tree	Chinch Tree	5
5	Ceucaena Leucocephala Tree	Subabal	20
6	Eucalyptus Tree	Neelgari Tree	8
7	Neem Tree	Kadu Neem	16
8	Clusterfig Tree	Umber Tree	1
9	Ocimum Tenuifium Tulsi	Ram Tulshi	20
10	Plumeria Tree	Chafa	7
11	Bauhiria Racemosa Tree	Apta	2
12	Pam Tree	Pam	6
13	Thaiks Tree	Thaiks	7
14	Mogra	Mogra	3
15	Crepe Jasmina Flower	Chadni	2
16	Hibiscus Rose	Jaswand	02



  
**PRINCIPAL**  
Art's & Commerce College  
Rahu, Tal. Daund, Dist. Pune.



# कला व वाणिज्य महाविद्यालय, राहु

मु.पो. राहु, ता. दौंड, जि. पुणे.

(शासन मान्यता क्र. एन.जी.सी. २००३ नमवि (१/२००३/म.शि.३) दि. १५ जुलै २००३)

(विद्यापीठ मान्यता क्र. PU/PN/AC/196-03(221/05)COLLEGE - 717)

मा. अंशु बी. राहुल सुभाष कुल

आमदार - लीड विधानमंडळ

अध्यक्ष - केंद्राध्यक्ष शिक्षण मंडळ, राहु

रा. अधिकाऱ्या सचिवालय - मा.पु.पुणे विद्यापीठ, पुणे.

प्रा.डॉ. गोपीनाथ साहेबराव बाजे

प्राचार्य

(एम.कॉम., डी.एच.ई., एम.फिल., पीएच.डी.)

मो. ९८२२८९४९९८

*College OC* (78)

जाचक क्र. *SR/26/2023/2024*

दिनांक : *17/07/2023*

पति

मा. सरपंच

ग्रामपंचायत कार्यालय राहु

राहु ता. दौंड जि. पुणे ४१२२०७

विषय : महाविद्यालयाचा ओल कचरा व मुका कचरा उचलण्यास कचरा गाडी मिळणेबाबत . . .

मा. महोदय

वरील विषया अनुसरून आपणास विनंती की कला व वाणिज्य महाविद्यालय राहु ता.दौंड जि.पुणे ४१२२०७ या अवारातील ओल कचरा व मुका कचरा उचलण्यास कचरा गाडी मिळावी ही विनंती .

सहकार्या बद्दल धन्यवाद !

कळावे

*Ms. Anurag*  
*9/07/2023*  
ग्रामपंचायत राहु  
ता. दौंड, जि. पुणे



*Principal*  
PRINCIPAL

Art's & Commerce College  
Rahu, Tal. Daund, Dist. Pune

*Principal*  
PRINCIPAL

Art's & Commerce College  
Rahu, Tal. Daund, Dist. Pune

Email : [artskommercerahu@gmail.com](mailto:artskommercerahu@gmail.com)

Website : [www.acscollegerahu.in](http://www.acscollegerahu.in)



‘कैलास शिक्षण मंडळाचे’

कला व वाणिज्य महाविद्यालय राहू

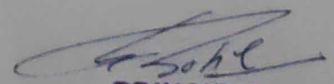
ता.दोंड, जि.पुणे ४१२२०७.

## ओला कचरा व सुका कचरा व्यवस्थापन

### अहवाल

कला व वाणिज्य महाविद्यालयाच्या मागणीनुसार दिनांक १७.०७.२०२३ रोजी मौजे ग्रामपंचायत कार्यालय राहू येथून कला व वाणिज्य महाविद्यालय येथे ओला कचरा व सुका कचरा उचलण्यासाठी कचरा गाडी बोलवण्यात आली. महाविद्यालय परिसरातील सर्व ओला व सुका कचरा एका ठिकाणी जमा करून तो कचरागाडीत टाकण्यात आला. व ओला व सुका कचऱ्याचे योग्य व्यवस्थापन महाविद्यालयीन स्तरावर करण्यात आले.



  
**PRINCIPAL**  
Art's & Commerce College  
Rahu, Tal. Daund, Dist. Pune.





GPS Map Camera

Rahu, Maharashtra, India  
H7C8+R5P, Rahu, Maharashtra 412207, India

Lat 18.572492°

Long 74.265242°

24/07/23 10:15 AM GMT +05:30

Google



*[Handwritten signature]*

**PRINCIPAL**  
Art's & Commerce College  
Rahu, Tal. Daund, Dist. Pune.



GPS Map Camera

Rahu, Maharashtra, India  
H7C8+R5P, Rahu, Maharashtra 412207, India  
Lat 18.57255°  
Long 74.265242°  
24/07/23 10:14 AM GMT +05:30

Google



*[Signature]*  
**PRINCIPAL**  
Art's & Commerce College  
Rahu, Tal. Daund, Dist. Pune.






  
**PRINCIPAL**  
Arts & Commerce College  
Rahu, Tal. Daund, Dist. Pune.



Peepal  
Tree

 GPS Map Camera

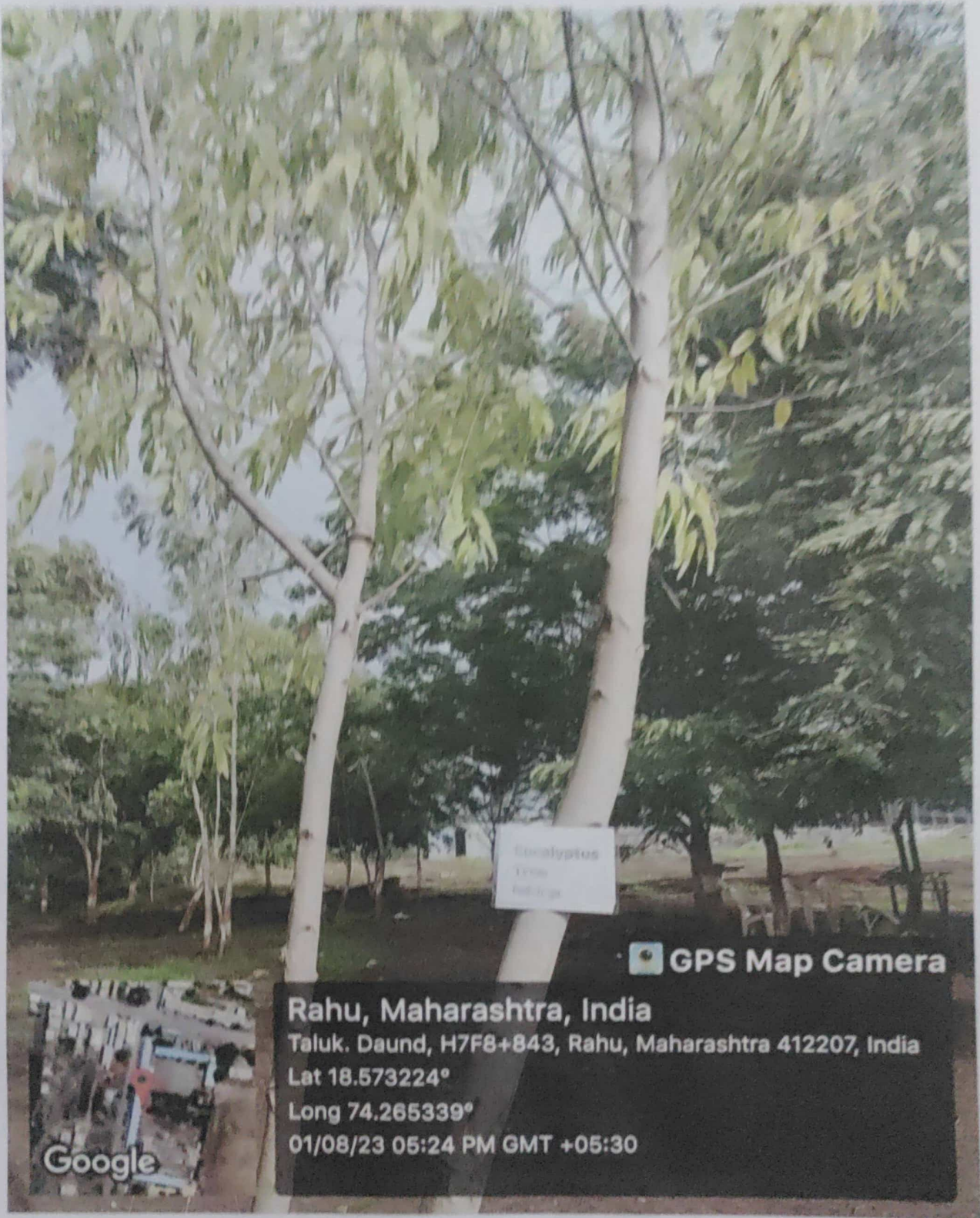
Rahu, Maharashtra, India  
Taluk. Daund, H7F8+843, Rahu, Maharashtra 412207, India  
Lat 18.573224°  
Long 74.265339°  
01/08/23 05:26 PM GMT +05:30

Google


  
**PRINCIPAL**  
Art's & Commerce College  
Rahu, Tal. Daund, Dist. Pune







Eucalyptus  
Tree  
Rahu

 GPS Map Camera

**Rahu, Maharashtra, India**  
Taluk. Daund, H7F8+843, Rahu, Maharashtra 412207, India  
Lat 18.573224°  
Long 74.265339°  
01/08/23 05:24 PM GMT +05:30

Google

  
**PRINCIPAL**  
Art's & Commerce College  
Rahu, Tal.Daund, Dist.Pune







Cebuena

GPS Map Camera

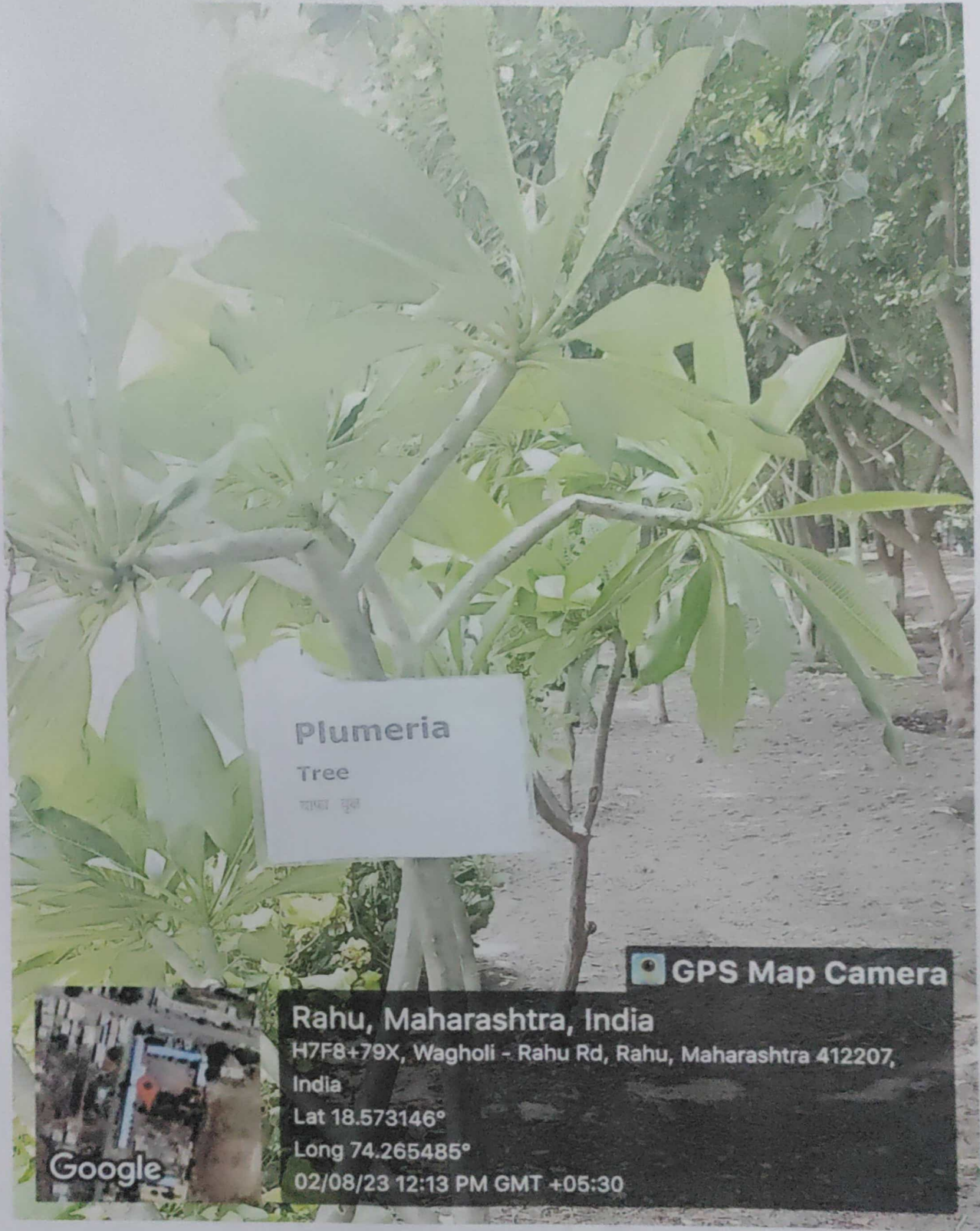
Rahu, Maharashtra, India  
H7F8+79X, Wagholi - Rahu Rd, Rahu, Maharashtra 412207,  
India  
Lat 18.573192°  
Long 74.265832°  
02/08/23 12:06 PM GMT +05:30

Google

*[Signature]*  
**PRINCIPAL**  
Art's & Commerce College  
Rahu, Tal.Daund, Dist.Pune.







Plumeria

Tree

पल्लव वृक्ष

GPS Map Camera

Rahu, Maharashtra, India

H7F8+79X, Wagholi - Rahu Rd, Rahu, Maharashtra 412207, India

Lat 18.573146°

Long 74.265485°

02/08/23 12:13 PM GMT +05:30

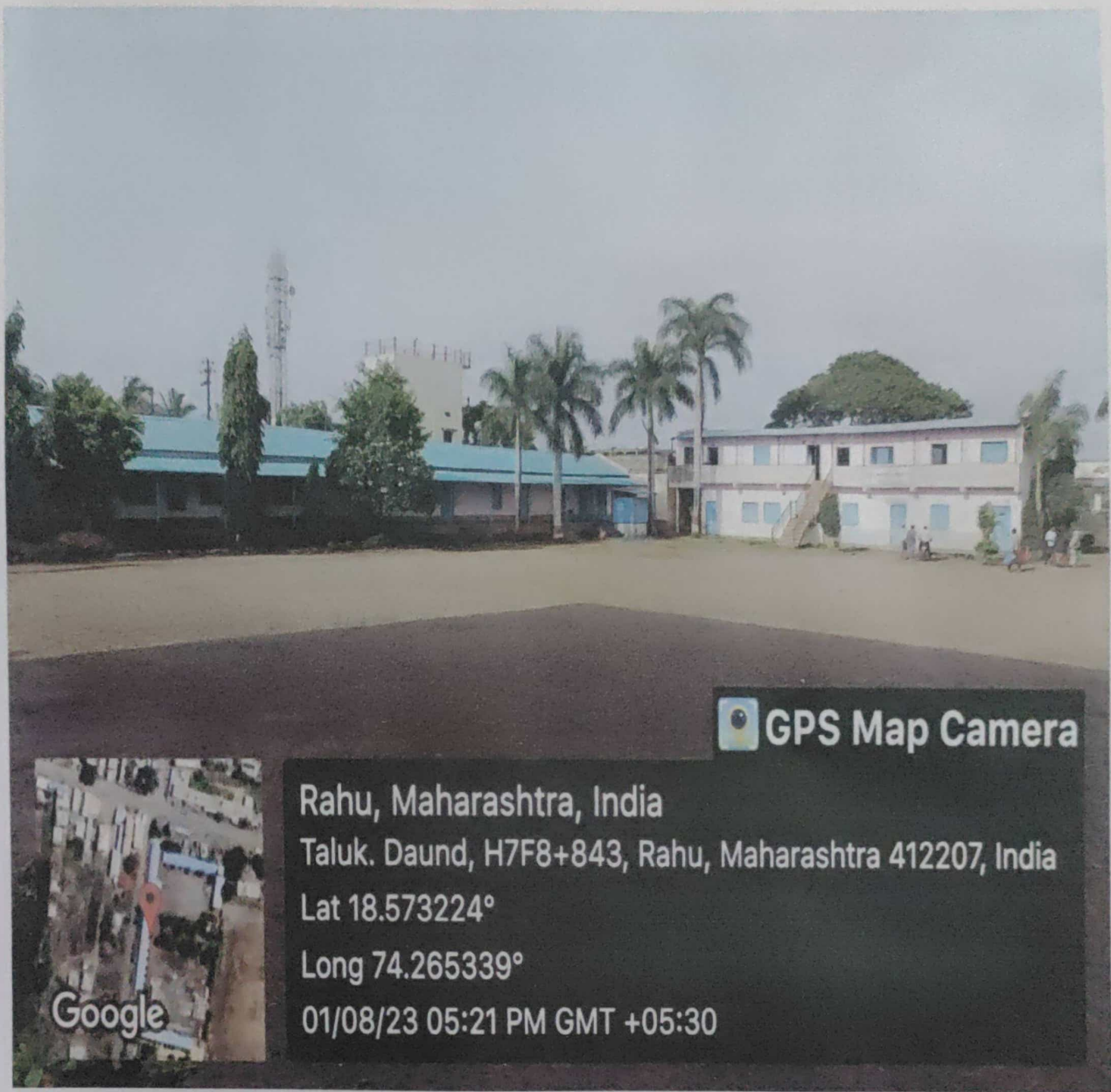



*[Signature]*

PRINCIPAL

Art's & Commerce College  
Rahu, Tal. Daund, Dist. Pune

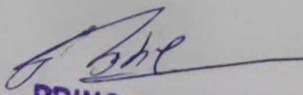




 **GPS Map Camera**



Rahu, Maharashtra, India  
Taluk. Daund, H7F8+843, Rahu, Maharashtra 412207, India  
Lat 18.573224°  
Long 74.265339°  
01/08/23 05:21 PM GMT +05:30

  
**PRINCIPAL**  
Art's & Commerce College  
Rahu, Tal.Daund, Dist.Pune.







  
**PRINCIPAL**

Art's & Commerce College  
Rahu, Tal. Daund, Dist. Pune.







GPS Map Camera

Rahu, Maharashtra, India  
H7F8+79X, Wagholi - Rahu Rd, Rahu, Maharashtra 412207,  
India  
Lat 18.573192°  
Long 74.265832°  
02/08/23 12:06 PM GMT +05:30

Google

  
PRINCIPAL  
Art's & Commerce College  
Rahu, Tal Daund, Dist. Pune.

